

# ***WE'RE ON YOUR SIDE***



***Labour's plans for a  
better Lambeth 2010***

# IF YOU WANT A BETTER LAMBETH WE'RE ON YOUR SIDE



**Cllr Steve Reed** Leader of Lambeth's Labour Councillors  
**Cllr Jackie Meldrum** Deputy Leader of Lambeth's Labour Councillors



## Dear Resident

**Labour's worked hard for four years to put Lambeth Council back on your side.**

Today, Lambeth is officially the fastest improving council in the country with no council tax increase for two years. Here are five ways Labour's made Lambeth better since you chose us to replace a failed Tory-Lib Dem coalition in May 2006.

### Labour has

**Frozen council tax with no increase for two years –**

after Lib Dems and Tories forced through a staggering 40% hike when they were in charge.

### Labour has

**Opened two new schools with three more on the way –**

after Lib Dems and Tories left 500 children without any school place on allocations day.

## **Labour has Doubled spending on youth services –**

after Lib Dems and Tories left Lambeth with the worst funded youth services and highest youth crime in London.

## **Labour has Cut out £30m of waste and stabilised the finances –**

after Lib Dems and Tories lost millions in fraud and left the council on the brink of bankruptcy.

## **Labour has Cut crime by boosting neighbourhood police teams and getting tough on drug dealers –**

after Lib Dems and Tories let our council go soft on criminals.

The Lib Dems and Tories have threatened savage cuts if they win on 6 May. Instead, Labour will keep cutting out waste and work more closely with the community to protect the frontline services you depend on.

That's our commitment to better council services – and you can trust us to do what we say because our record shows we've already been doing it for the past four years.

**If you want Lambeth to  
keep getting better  
We're on your side**

## **LABOUR'S COMMITMENTS**

# **to you...**

- 1 KEEP COUNCIL TAX AS LOW AS POSSIBLE** and protect essential services by cutting out waste.



- 2 ZERO TOLERANCE OF ANTI-SOCIAL BEHAVIOUR** with a uniformed hit squad under police command ready to move into crime hot-spots.

- 3 BIGGEST-EVER INVESTMENT TO FIX SUB-STANDARD ROADS AND PAVEMENTS** and make Lambeth London's greenest council with a 20% cut in carbon emissions.

- 4 YOUTH ACTIVITIES WITHIN A MILE OF EVERY HOME** and two new primary schools to tackle the shortage of places.

- 5 MAJOR EXPANSION OF SPORT AND LEISURE** with four new public pools and free swimming for every resident.



Labour's delivered ALL the key commitments we made before the last council elections four years ago. That's why you can trust us to deliver on our commitments to you this time.



# LOW COUNCIL TAX AND A WAR ON WASTE



Labour freezes council tax for the second year running.

## Labour's frozen your council tax with no increase for two years in a row.

What a difference from the staggering 40% council tax hike the Lib Dems and Tories forced through when they were in charge! At the same time, Labour's invested more money in frontline services paid for by cutting out £30 million waste the Lib Dems and Tories left behind.



Labour won't throw your money down the drain like the Lib Dems and Tories did

## The facts speak for themselves – you get more but pay less with Labour.

Lib Dem spending plans would mean a tax rise of AT LEAST 10% a year – just like the last time they were in charge. Don't believe

## LABOUR'S COMMITMENTS

### to you...

- ▶ Keep council tax as low as possible with better value for money and high-quality services.
- ▶ Protect frontline services by joining up with other organisations to cut costs.
- ▶ Crack down on fraud with police working full-time in the town hall.
- ▶ Publish all key council costs over £1000 to increase public scrutiny and stop wasteful spending.
- ▶ Make people who refuse to pay their council tax and rent pay up so honest residents aren't left to foot the bill.

them when they say they won't do it, that's what they said last time before they forced the average household to pay an extra £1000 in council tax. After years of Lib Dem tax hikes thrown away on Lib Dem waste Labour's got Lambeth's finances under control – and that means lower council tax bills for every household.



## THE LIB DEM / TORY THREAT

- Lib Dem spending plans would mean an immediate 10% council tax rise.
- Lib Dem and Tory councillors voted to increase each others' allowances by up to 100%.

## COUNCIL TAX RISES

Lib Dem / Tory  
40%

Labour  
0%

**LABOUR-**  
we're on  
your  
side ✓



# KEEPING YOU SAFE WITH A CRACKDOWN ON CRIME

**Labour's taken tough action to crack down on crime because people deserve to go about their lives in safety. As a result, crime has fallen every single year since Labour was elected.**

We've targeted drug dealers and buyers with ASBOs after the Lib Dems and Tories issued none at all for three years. We introduced neighbourhood police teams then boosted them with extra uniformed officers that Lib Dems campaigned against. We've targeted help that's steered hundreds of young offenders away from gun, gang and knife crime after Lib Dems did nothing for four years.

## TARGETING VIOLENT GANGS WITH ASBOs

Lib Dem /Tories  
**0**

Labour  
**86**

Over three years

Over three years

Now it's time for zero tolerance against all anti-social behaviour that disrupts our communities, tough action against owners using dogs as weapons, and a stark choice to persistent offenders to accept help to quit crime or face harsh sanctions that will stop them offending again.



*Labour will use Community Payback to make offenders pay for their crimes and as a deterrent against reoffending.*

**Lambeth's getting safer with Labour – don't let the Lib Dems and Tories send our council soft on crime again.**

**YOUTH CRIME FELL  
AFTER LABOUR  
DOUBLED ITS SPENDING  
ON YOUTH SERVICES**

- Local Lib Dems campaigned to decriminalise kerb crawling – putting more women at risk of abuse.
- Tories are closing down London's rape crisis centres.
- Lib Dems campaigned to cut back local police teams and voted to legalise hard drugs.
- Tory cuts will reduce the number of police on our streets.



*Lambeth's Lib Dems tried to legalise kerb crawling.*

## LABOUR'S COMMITMENTS

# to you...

- ▶ **Protect crime-hit neighbourhoods with an anti-social behaviour hit-squad under police command ready to move in and make the area safe.**
- ▶ **Make offenders pay back for their crimes by carrying out work in the local area chosen by the people who live there.**
- ▶ **Expand the dogs service to round up animals used for fighting, tag dogs on estates, prosecute irresponsible owners and ban dogs from children's play areas.**
- ▶ **Tackle youth and gang-related crime with a stark choice for offenders to accept help to get out of crime or face tough sanctions that will stop them reoffending.**
- ▶ **Expand the Domestic Violence Team to support more victims and reduce violence in the home.**

**THE LIB DEM /  
TORY THREAT**



# THE BEST START IN LIFE FOR EVERY CHILD

## LABOUR'S COMMITMENTS

### to parents...

- ▶ Create more primary places in Streatham, West Norwood, Herne Hill and Brixton with two brand new schools and expansion of others.
- ▶ Eliminate the remaining shortage of secondary places with a new academy and primary school on the Fenstanton site in Tulse Hill.
- ▶ Open up schools for more community use after school hours.
- ▶ Lobby government to protect funding for Sure Start children's centres.
- ▶ Involve parents, teachers and carers in a crack-down on bad behaviour and bullying to help drive achievement even higher.



Labour's opened two new secondary schools and won funding for two more primaries.



## SCHOOLS WHERE EVERY CHILD ACHIEVES

Labour knows that every child deserves the best start because that's the way to guarantee success throughout life.

***With Labour, Lambeth's schools have improved dramatically.***

We've opened two new secondary schools to eliminate the shortage of places that meant 500

### SHORTAGE OF SCHOOL PLACES

Under Lib Dem /Tories  
**500**

With Labour  
**0**

children were told they had no secondary school place when the Lib Dems and Tories were in charge.

We've invested to support the hard work of children, parents and teachers so that Lambeth's schools achieve better than the national average for GCSE results – outstripping neighbouring boroughs like Tory Wandsworth and Lib Dem Southwark.

**GCSE  
results  
up 9%  
in one  
year -  
beating  
national  
average**

Now we're working with the Government to build new primary schools and expand others where demand is high so there's a place in a good local primary for every child that wants one.

# MORE FOR YOUNG PEOPLE TO DO

**LABOUR-**  
we're on  
your  
side ✓

## LABOUR'S COMMITMENTS

### to young people ...

- ▶ Guaranteed support for every school leaver to help find a job, training or paid work experience.
- ▶ Supervised youth activities available in every neighbourhood and within one mile of every home.
- ▶ A youth privilege card offering discounts for every young person that will be withdrawn for bad behaviour until earned back through community work.
- ▶ Support Lambeth's youth mayor with a bigger budget and more say over services for young people.
- ▶ Free swimming at all times for every resident under 18.
- ▶ Supported housing with parenting support for teenage mothers who can't live at home.



*Labour's doubled spending to provide more positive activities for young people.*

Young people growing up need help and support to develop positive healthy interests. Under the Lib Dems and Tories Lambeth had the worst-funded youth service in London. That meant young people were left to hang around on the streets where it's all too easy to get into trouble with gangs and anti-social behaviour. Now Labour's doubled spending to provide the biggest ever range of youth activities – and it's led to a dramatic fall in youth crime. Now Labour's pledged to protect that investment and guarantee a range of activities for young people within a mile of every home.



## THE LIB DEM / TORY THREAT

- The Lib Dem / Tory record shows they will CUT spending on youth services and leave young people to hang about on the streets instead.
- Under the Lib Dems and Tories hundreds of children were denied a school place - now they plan to cancel Labour's plans for a further new secondary school.



*Labour will expand sport and leisure facilities and open four new swimming pools with free swimming for Lambeth residents.*



# GET PEOPLE BACK TO WORK FAST

**LABOUR-**  
we're on  
your side ✓

## LABOUR'S COMMITMENTS

### to you...

- ▶ Create 1000 new jobs, apprenticeships and training opportunities with the council's partners and local businesses
- ▶ Recruit local people to work on publicly funded programmes such as council housing, road resurfacing and building new schools
- ▶ Help people back to work with skills training across the borough and employment centres in areas with the highest unemployment
- ▶ Promote street and farmers markets across the borough where local people want them
- ▶ Bring empty shops back into use by working with owners to run services or voluntary activities that keep our high streets busy



## THE LIB DEM / TORY THREAT

- Lib Dems and Tories voted **AGAINST** the council's plans to tackle unemployment – they would leave people to struggle in poverty instead.
- There were **NO** council apprenticeships or work experience schemes when the Lib Dems and Tories were in charge – it took Labour to introduce both.

The worldwide recession has left many local people looking for work or fearful about losing their job. There's a real role for the council in helping people back to work fast.

Labour's worked with local businesses to invest millions of pounds to give people the skills they need to find work with good prospects for the future.

**Shockingly, Tories and Lib Dems joined forces to vote AGAINST the back-to-work plans saying helping the unemployed was not a priority for them.**



*Labour has created Job Shops in the borough to give people instant access to jobs available in their area.*

Labour knows a decent job is the best way to tackle poverty and give people the chance they need to provide a decent quality of life for themselves and their families.



*Labour's giving young people the training they need to find work.*

# A BOOST FOR LEISURE, LIBRARIES & CULTURE

Labour will renew Lambeth's crumbling old leisure centres and build an Olympic legacy by giving more people the chance to get involved in sport.

## LABOUR'S COMMITMENTS

### to you...

- ▶ **STREATHAM:** new leisure centre, pool and ice rink by 2012.
- CLAPHAM:** new leisure centre, pool and library by 2011.
- WEST NORWOOD:** new leisure centre and pool by 2014.
- WATERLOO:** new pool and gym in Doon Street.
- KENNINGTON:** Old Lilian Baylis site under community control.
- BRIXTON:** complete upgrade works to Brixton Rec.

Too many of our existing leisure centres and pools are on their last legs – so Labour will rebuild them and build brand new facilities in areas where there's currently no provision.

We'll protect existing libraries and upgrade them with new technology, and we'll create brand new library facilities in Clapham and Streatham.

- ▶ Free swimming for every resident at specific times, and for under-18s and over-60s at all times.
- ▶ Expand the library service with new books and IT resources and a new library in Clapham.
- ▶ Build an Olympic legacy with an annual sports tournament for all age groups.

- ▶ Save the country show, free fireworks and Christmas lights from any renewed Lib Dem threat to their future.
- ▶ Support local groups to deliver community festivals and encourage a new Lambeth world music and performance festival to showcase local and international talent.

## Rebuilding Lambeth's Leisure Centres



### THE LIB DEM / TORY THREAT

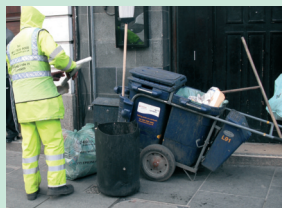
- Tried to sell Brixton Rec to property developers and opposed the new town square.
- Tried to sell off Clapham swimming pool with no guarantee of a new one.
- Watched Streatham leisure centre crumble without any secure plans to replace it.
- Refused to agree a new swimming pool for West Norwood.

# A STREET YOU'RE PROUD TO LIVE IN

## LABOUR'S COMMITMENTS

### to you...

- ▶ The biggest-ever single investment to resurface sub-standard roads and pavements paid for by selling off redundant council office blocks.
- ▶ Keep Lambeth's streets among the cleanest in London
- ▶ Speed up removal of dumped rubbish, graffiti and abandoned vehicles by letting residents report problems by text message or mobile phone applications.
- ▶ Reduce the number of family homes converted into flats.
- ▶ Keep parking fair by letting more residents choose the hours they want controls to operate and only introduce new resident-parking where local people want it.
- ▶ Keep car parking charges lower for vehicles with less carbon emissions and expand shared car club schemes across the borough.



*Labour's keeping our streets cleaner and replacing more worn out roads and pavements.*

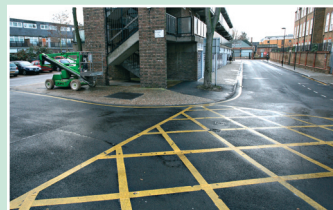
**Lambeth's streets are the cleanest they've ever been – now officially one of the top three cleanest of London's 33 boroughs.**

Bins are emptied on time, we recycle more waste than at any time in our history, we've upgraded all the borough's street lighting, and we ended parking misery by scrapping the unfair Lib Dem/Tory rules that saw them award their parking contractor profit bonuses for over-zealous ticketing.

Labour spends much more to resurface roads and replace broken pavements than the Lib Dems and Tories did. But we know too many of our roads and pavements are still not good enough. That's why we are promising the biggest-ever single investment to renew substandard roads and pavements right across Lambeth. And we'll pay for it by selling off office blocks that are no longer needed as we streamline the council and make it more efficient.



Lib Dems and Tories wasted millions on new council office blocks like this one – now Labour will sell those that aren't needed to pay for better roads and pavements.



**LABOUR-  
we're on  
your  
side** ✓



# MAKE LAMBETH LONDON'S GREENEST BOROUGH

## LABOUR'S COMMITMENTS

### to you...

- ▶ Expand recycling to cover half of all household waste by 2020, including food and green waste.
- ▶ Support cycling with more cycle paths, safe routes and secure cycle parking in busy areas.
- ▶ Reduce household carbon emissions by at least 10% by supporting community-led sustainability projects and insulating more homes.
- ▶ Make all new council buildings carbon-neutral and reduce emissions from existing buildings by at least 20%.
- ▶ Support neighbourhood food growing schemes so residents have access to low-cost locally grown food.
- ▶ Encourage new green businesses and social enterprises to make Lambeth a green hub for London with new jobs and services for local people.

**10:10**

Labour's signed Lambeth up to cut carbon emissions by 10% in 2010



## THE LIB DEM / TORY THREAT

- Lib Dem and Tory-led Southwark recycles far less than Labour Lambeth – and Lib Dems wouldn't let you recycle food waste, textiles or drinks packaging when they ran our council.
- Lib Dems and Tories pretend they care about climate change but they boycotted Lambeth's Climate Change Conference.

**Climate change is one of the greatest threats ever to confront humanity. It's a man-made problem and it's up to all of us to take action against it.**

Labour's already given Lambeth the toughest carbon-reduction target in London, extended recycling to cover a quarter of all household waste, promoted cycling and walking to reduce car journeys, and introduced a 'Green Community Champions' scheme to support local neighbourhoods where people want to take action to live more sustainably.



Now Labour will make Lambeth London's greenest borough with action to reduce the borough's overall carbon footprint.



We will reduce household carbon emissions with loans to help people insulate their homes – saving the planet and saving you money on fuel bills at the same time! We will encourage new green businesses to set up in Lambeth so that local people benefit from the growth in green jobs and services. And we will set the council a tough target to reduce emissions from its own buildings by 20%.

## RECYCLING

Lib Dem Southwark  
**21%**

Labour Lambeth  
**25%**

# A NEW DEAL FOR BETTER HOUSING

## LABOUR'S COMMITMENTS

### to you...

- ▶ A Labour council working with a Labour government will upgrade 10,000 substandard homes with:
- ▶ New windows, doors and roofs to keep out the wind, rain and cold.
- ▶ Central heating so every home is properly heated and free from damp.
- ▶ Modern kitchens and bathrooms..



*Labour is building more and more eco-friendly sustainable social housing to meet the needs of local residents.*

## Everyone deserves to live in a decent home

**Labour's improving council homes across Lambeth. We've already started replacing rotten, worn-out windows, doors and roofs.**

Labour's investment is making a real difference to thousands of people – and we aim to upgrade 10,000 homes over the next four years.

But it's all at risk if the Lib Dems and Tories get their way. They voted AGAINST bringing in the £250 million needed to pay for all the work. That's worth £8000 on average for every council home.



*Labour is improving council houses by replacing windows, installing modern bathrooms, kitchens and fitting central heating.*



### THE LIB DEM / TORY THREAT

- Lib Dems and Tories voted to reject funding worth £8000 on average for every council home - scrapping plans for new windows and other improvements.
- Lib Dem proposals would mean £9m cuts that would devastate the housing service. Their axe would hit area offices, concierge services, repairs, health and safety checks and security patrols.
- Tories will scrap the rule that 50% of homes in new developments should be affordable.
- Last time they were in power Lib Dems and Tories went soft on fraud and lost £3 million, while one of their senior councillors was convicted of public theft.

## £8000

**The price of voting  
Lib Dem or Tory is waving goodbye  
to an average of £8000 improvements  
for every council home in Lambeth.**

### **A better deal for council tenants and leaseholders**

#### **Council tenants and leaseholders have put up with substandard housing services for too long.**

We need action to get repairs done on time and re-let empty homes faster. And we need housing staff trained to treat residents with courtesy and respect at all times.

Lambeth's housing service is run by Lambeth Living, with a board that includes elected tenant and leaseholder representatives. Labour councillors will hold Lambeth Living to account to improve the quality of service residents receive.

We will give Lambeth Living 12 months to improve the quality of repairs, reduce the time taken to re-let empty homes, keep rent rises down and improve the service to leaseholders or we will sack them and put the service under new management.



*Labour believes people should feel safe with zero tolerance of anti-social behaviour and police hit squads to move into crime hot spots.*

**LABOUR-  
we're on  
your  
side** ✓

*Labour will take tough action against dangerous dogs and their owners, especially those who use them as weapons or are involved in dog fighting.*



### **We will make Lambeth Living and the Council to work together to:**

- ▶ Carry out repairs quickly and properly.
- ▶ Keep rents and charges as low as possible.
- ▶ Make rent-dodgers pay up.
- ▶ Issue service charges accurately and on time.
- ▶ Keep estates clean, properly lit and well maintained.
- ▶ Sack contractors that fail to do the job properly.
- ▶ Offer more help for leaseholders with fairer charges, affordable loans, and major bills that can be postponed until the property is sold.

### **A BETTER DEAL**

Residents on estates managed by housing associations deserve a better deal too, with complaints listened to and problems put right quickly.

Labour will set up a borough-wide Housing Charter with enforceable minimum standards for all social landlords.

### **CUT THE QUEUE FOR COUNCIL HOUSING**

Too many families live in homes that are too small for their families. Children of different sexes are forced to share bedrooms and there's no space for children to play or do their homework. With over 13,000 people waiting for a new home in Lambeth alone that will only change if we cut the queues by making more homes available.

### **Labour's Cut-the-Queues Action Plan**

- Tackle illegal subletting so more homes are available for people on the waiting list.
- Stop cheats who jump the queue for council housing unfairly.
- Make sure 50% of homes in new developments are affordable or social housing.
- Bring empty homes back into use faster than the London average.
- Build more social housing.
- Never sell off council-owned homes unless the proceeds will pay to make at least double the number of homes available for rent.
- Help people get a step on the property ladder by supporting more shared-ownership and cooperative housing schemes.



# SUPPORT AND RESPECT FOR OLDER AND DISABLED PEOPLE

## LABOUR'S COMMITMENTS

### to you...

- ▶ Open more lunch clubs for older people in every town centre with health, finance and security professionals on hand.
- ▶ Put people who use care services in charge with more control over who delivers their services and prioritise services for those in greatest need.
- ▶ Set up a register of reliable trades people to tackle rogue traders and introduce cold-calling zones to stop con-tricksters.
- ▶ More healthy activities for all including free swimming, guided walks, and local keep fit classes.
- ▶ Back the 24-hour Freedom Pass that offers free travel for older people.
- ▶ Set up a new team to prevent the abuse of vulnerable older and disabled people and ensure high standards of care and safety.



*Labour are committed to helping older residents and other vulnerable or disabled people by ensuring high standards in care and safety.*

**After a lifetime of hard work older people deserve to live their lives in dignity. Labour will make sure the council offers activities to help older people stay fit, healthy and well supported.**

We will tackle the twin fears of isolation and crime that turn some older people into prisoners in their own homes. And we will set up a team of professionals to prevent the abuse of vulnerable older people who, because of their frailties, might be at risk if we don't provide the safeguards they need.

Disabled people deserve to live their lives to the full. That means more control over their lives, the chance to go to work, socialise with friends and play a full role in the community like everybody else.

We will introduce a new deal for carers who look after older or disabled friends or relatives, offering more support and a well-earned break from their responsibilities.



*Labour will provide more luncheon clubs to help elderly people to continue to enjoy a healthy and active lifestyle.*



## THE LIB DEM / TORY THREAT

- **Joined forces to close the Kennington day-care centre – now they are threatening more cuts that target the vulnerable.**
- **Voted against the funding that protected vital services for vulnerable older and disabled people.**

# PUTTING PEOPLE IN CONTROL ...

## LABOUR'S COMMITMENTS

### to you ...

- ▶ Let local people choose the priorities for their area with more neighbourhood decision making involving local residents.
- ▶ A neighbourhood summit in every neighbourhood so residents can quiz leaders responsible for local services.
- ▶ Make sure public services meet the needs of all groups in Lambeth including black and minority ethnic communities, the lesbian and gay community, women, and faith groups.
- ▶ Open a voluntary sector resource centre to help local groups run projects that support their community.



Labour introduced the first Lambeth town-centre expos to encourage local people to take control and make decisions about their own area.

- ▶ Make staff treat residents with professionalism, courtesy and respect at all times so Lambeth becomes a model of high-quality customer service.



### THE LIB DEM / TORY THREAT

- Lib Dems and Tories voted AGAINST supporting resident-led forums
- In their four years in charge, Lib Dems never appointed a single woman or black person from their own ranks onto the council's ruling executive.

## Labour believes local people should be in control

Labour will protect and improve services by giving local communities and service-users more control over them.

Instead of top-down control from the town hall, Labour will promote initiatives that hand more power to local people guided by the cooperative values of fairness, accountability and responsibility.

the guardian

“... ministers are to champion the south London borough of Lambeth as their new vision of how local government can work ...”

18 February 2010

**LABOUR-**  
We're on  
your  
side ✓

# LABOUR'S COMMITMENTS *to you...*

- 1** **KEEP COUNCIL TAX AS LOW AS POSSIBLE**  
and protect essential services by cutting out waste



- 2** **ZERO TOLERANCE OF ANTI-SOCIAL BEHAVIOUR** with a uniformed hit squad under police command ready to move into crime hot-spots



- 3** **BIGGEST-EVER INVESTMENT TO FIX SUB-STANDARD ROADS AND PAVEMENTS** and make Lambeth London's greenest council with a 20% cut in carbon emissions



- 4** **YOUTH ACTIVITIES WITHIN A MILE OF EVERY HOME** and two new primary schools to tackle the shortage of places



- 5** **MAJOR EXPANSION OF SPORT AND LEISURE** with four new public pools and free swimming for every resident

**Lambeth's getting better.  
Vote Labour on 6 May to keep it that way.**

We're always interested in your comments, views and opinions. If you'd like to get in touch or help out with election campaign here's how to contact us:

**Phone 020 8678 6407 Email [contact@lambethlabour.com](mailto:contact@lambethlabour.com) Website [www.lambethlabour.com](http://www.lambethlabour.com)**

**If you want Lambeth to keep getting better**

**We're on  
your side**

